

PARTS CATALOG

T6.165 Semi-Power Shift Tractor Tier 4B

Print No. 696049152
8/2015



PARTS CATALOG

T6.165 Semi-Power Shift Tractor Tier 4B

Print No. 696049152
8/2015

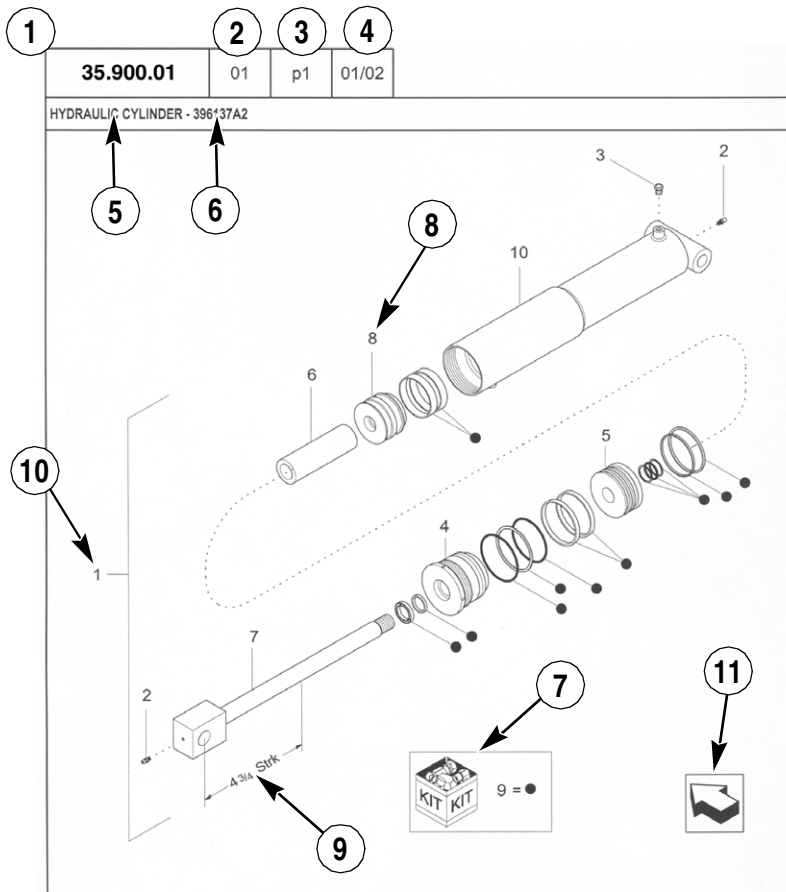


GENERAL INFORMATION

1. Whenever the terms left and right are used, it should be understood to mean from a position facing in direction of travel.
2. Throughout this manual you may find common hardware not illustrated, but listed in the description column. The service part immediately preceding a hardware listing is the part using these particular items for mounting purposes. This hardware is not included with the service part or assembly when ordered as a replacement.
3. The illustrations show typical assemblies plus individual parts but in all cases may not show the exact shape or detail of parts required. However, the purpose for the illustrations is to identify parts performing like functions. Whenever possible illustrations are located at the beginning of each section or immediately adjacent to the applicable text.
4. CNH America LLC is continually striving to improve its products. We must, therefore, reserve the right to make improvements or changes when it becomes practical and possible to do so, without incurring any obligation to make changes or additions to the equipment sold previously.

CNH America LLC, Racine, WI 53404 U.S.A.

How to Use Your Parts Catalog



HYDRAULIC CYLINDER - 396137A2					
REF	FN	PART NUMBER	YR/SN	QTY	DESCRIPTION
1	1	396137A2	BTW 01/85 & 02/02	1	CYLINDER ASSY. 4-3/4 in strk, Inc 2-10
2		31-95	Before 01/85	2	FITTING
2		219-8	From 01/85	2	NIPPLE, LUBE Grease, 1/4 tpr x 17/32
3		{402475A2}		1	BREATHER
4		402474A1		1	CAP CYLINDER END
5		402468A1	BSN JJC0189200	1	PISTON ROD/GLAND
5		145221C3	ASN JJC0189200	1	PISTON
6		402471A1		1	SPACER
7		402473A1		1	ROD, PISTON
8		402469A1		1	PISTON ROD/GLAND
9		402476A1		1	PACKAGE, SEALS
10		NSS		1	NOT SERVICED SEPARAT CASE ASSEMBLY
(1) 08-20					
STANDARD			MODELS		

How to Use Your Parts Catalog

1. Figure Number
2. Sequence code within the Figure Number
3. Page number within the Sequence Code
4. Date of Printing (month / year)
5. Figure Description
6. General information regarding the figure
7. Parts supplied in repair kits per symbol reference
8. Figure call-out of the part number (REF)
9. Technical Specifications relating to the part indicated
10. Figure call-out includes bracketed items, the included items may also be listed in the additional description area
11. Orientation - Arrow indicates front of the machine
12. Footnote - Additional information relating to the part number. In this example, 08-20 equals another figure that this part is shown on.
13. Part Number
 - NSS = Non-serviced parts
 - Bracketed numbers = not available as service parts in this market
14. Not Available as service part in this market
15. YR/SN
 - Year
 - Before 01/85 = Part valid for production January 1985 and before
 - From 01/85 = Part valid for production from January 1985 and after
 - BTW 01/85 & 02/02 = Part valid for machines produced between January 1985 and February 2002.
 - Serial Number (P.I.N.)
 - BSN JJC0268800 = Part valid for serial number JJC0268800 and below
 - ASN JJC0268800 = Part valid for serial number JJC0268800 and above
 - BTW JJC0178000 & JJC0179000 = Part valid for serial numbers between JJC0178000 & JJC0179000
16. Total Quantity of the Part referred to in the page. The quantity can be replaced by the following indications:
 - AR = quantity as required
 - X = as required
17. Part Description
18. Additional description of the part to help confirm identification
19. Figure Notes
20. Model Number(s)

Explanation of Abbreviations

Abbreviation	Meaning
adj	adjustable
amp	ampere
AR	As required
ASN	Serial number and after / P.I.N. and after
barb	barb
blkhd	bulkhead
boss	boss
BSN	before serial number / before P.I.N
BTW	between
cc	cubic centimetre
chain	chain
cl	class
cp pt	cup point
CRS	Chrome Alloy Steel
CST	Carbon Steel
cu yd	cubic yard
deg	degree
dia	diameter
dr type	drive type
dry	dry
fc	face
fc sl	face seal
fem	female
fem PT	female pipe thread
fl	flare
ft	feet (or foot)
gal	gallon(s)
gr	grade
hd	head
hp	horsepower
ID	inside diameter

Abbreviation	Meaning
in	inch(es)
Inc.	includes
inv fl	inverted flare
K	kilo
kg	kilogram
L	litre
lb	pound(s)
lg	long
LH	left hand
LH thd	left hand thread
links	links
M	(prefix) metric thread size
m	metre
male	male
mm	millimetre
NF	National Fine
No.	number
NS	National Super Fine
OD	outside diameter
ohm	electrical unit of resistance
Or	O-ring
orifice	orifice
P	pitch
piece	piece
psi	pounds per square inch
PT	pipe thread
rd	round
rd holes	round holes
RH	right hand
RH thd	right hand thread
rpm	revolutions per minute

Explanation of Abbreviations

Abbreviation	Meaning
sl	self locking
slat	slat
spool	spool
sq	square
SST	Stainless Steel
st	self tapping
stem	stem
strk	stroke
sw	swivel
T	teeth
Teflon	Teflon
thin	thin
thk	thick
tpr	taper

Abbreviation	Meaning
tube	tube
type	type
V	volt(s)
W	watt(s)
way	way
wide	wide
X	as required
yd	yard

Dimensions

Metric and U.S. hardware dimensions do not show the numeric designations of standard coarse threads. A number following a semi colon (;) is the class or grade of hardware. A comma (,) represents the decimal point (.) used in U.S. dimensions.



TABLE OF CONTENTS

00.000.00		PICTORIAL INDEX - MAIN SECTIONS
00.000.05		PICTORIAL INDEX - MACHINE COMPLETION AND EQUIPMENT
00.000.10	01	PICTORIAL INDEX - ENGINE
00.000.10	02	PICTORIAL INDEX - ENGINE
00.000.10	03	PICTORIAL INDEX - ENGINE
00.000.18		PICTORIAL INDEX - CLUTCH
00.000.19		PICTORIAL INDEX - POWER COUPLING
00.000.21	01	PICTORIAL INDEX - TRANSMISSION
00.000.21	02	PICTORIAL INDEX - TRANSMISSION
00.000.23		PICTORIAL INDEX - 4WD LINES
00.000.25	01	PICTORIAL INDEX - FRONT MECHANICAL DRIVE
00.000.25	02	PICTORIAL INDEX - FRONT MECHANICAL DRIVE
00.000.27		PICTORIAL INDEX - REAR DRIVE AXLE
00.000.31	01	PICTORIAL INDEX - IMPLEMENT POWER TAKE OFF
00.000.31	02	PICTORIAL INDEX - IMPLEMENT POWER TAKE OFF
00.000.33	01	PICTORIAL INDEX - BRAKES & CONTROLS
00.000.33	02	PICTORIAL INDEX - BRAKES & CONTROLS
00.000.33	03	PICTORIAL INDEX - BRAKES & CONTROLS
00.000.35	01	PICTORIAL INDEX - HYDRAULIC SYSTEMS
00.000.35	02	PICTORIAL INDEX - HYDRAULIC SYSTEMS
00.000.35	03	PICTORIAL INDEX - HYDRAULIC SYSTEMS
00.000.35	04	PICTORIAL INDEX - HYDRAULIC SYSTEMS
00.000.37	01	PICTORIAL INDEX - HITCHES, DRAWBARS AND IMPLEMENT COUPLINGS
00.000.37	02	PICTORIAL INDEX - HITCHES, DRAWBARS AND IMPLEMENT COUPLINGS
00.000.37	03	PICTORIAL INDEX - HITCHES, DRAWBARS AND IMPLEMENT COUPLINGS
00.000.39		PICTORIAL INDEX - FRAMES
00.000.41		PICTORIAL INDEX - STEERING
00.000.44	01	PICTORIAL INDEX - WHEELS
00.000.44	02	PICTORIAL INDEX - WHEELS
00.000.50		PICTORIAL INDEX - CAB CLIMATE CONTROL
00.000.55	01	PICTORIAL INDEX - ELECTRICAL SYSTEMS
00.000.55	02	PICTORIAL INDEX - ELECTRICAL SYSTEMS
00.000.55	03	PICTORIAL INDEX - ELECTRICAL SYSTEMS
00.000.55	04	PICTORIAL INDEX - ELECTRICAL SYSTEMS

TABLE OF CONTENTS

00.000.55	05	PICTORIAL INDEX - ELECTRICAL SYSTEMS
00.000.55	06	PICTORIAL INDEX - ELECTRICAL SYSTEMS
00.000.55	07	PICTORIAL INDEX - ELECTRICAL SYSTEMS
00.000.82		PICTORIAL INDEX - FRONT LOADER
00.000.88		PICTORIAL INDEX - ACCESSORIES
00.000.90	01	PICTORIAL INDEX - PLATFORM, CAB, BODYWORK AND DECALS
00.000.90	02	PICTORIAL INDEX - PLATFORM, CAB, BODYWORK AND DECALS
00.000.90	03	PICTORIAL INDEX - PLATFORM, CAB, BODYWORK AND DECALS
00.000.90	04	PICTORIAL INDEX - PLATFORM, CAB, BODYWORK AND DECALS
00.000.90	05	PICTORIAL INDEX - PLATFORM, CAB, BODYWORK AND DECALS
00.000.90	06	PICTORIAL INDEX - PLATFORM, CAB, BODYWORK AND DECALS
00.100.01		IDENTIFICATION PLATES AND VERSION LIST
00.100.04	01	OPTIONAL EQUIPMENT
00.100.04	02	OPTIONAL EQUIPMENT
00.100.04	03	OPTIONAL EQUIPMENT
00.100.04	04	OPTIONAL EQUIPMENT
00.100.04	05	OPTIONAL EQUIPMENT
00.100.04	06	OPTIONAL EQUIPMENT
00.100.04	07	OPTIONAL EQUIPMENT
00.100.04	08	OPTIONAL EQUIPMENT
00.100.04	09	OPTIONAL EQUIPMENT
05.000.00		SECTION INDEX - MACHINE COMPLETION & EQUIPMENT
05.100.01		INITIAL STOCKING LIST (LIST A)
05.100.02		INITIAL STOCKING LIST (LIST B)
05.100.03	01	FILTER
05.100.03	02	CAPACITIES
10.000.00	01	SECTION INDEX - ENGINE
10.000.00	02	SECTION INDEX - ENGINE
10.000.00	03	SECTION INDEX - ENGINE
10.001.AD		VAR - 392194, 392210, 758400, 758588 - ENGINE, ASSY
10.001.AK	01	VAR - 392195, 392204, 743764, 743766, 758413, 758414, 758415, 758416, 758581 - ENGINE, SUPPORT
10.001.AK	02	VAR - 392195, 392204, 743764, 743766, 758413, 758414, 758415, 758416, 758581 - ENGINE, SUPPORT
10.103.AH		VAR - 392195, 392204, 743764, 743766, 758413, 758414, 758415, 758416, 758581 - ENGINE FLYWHEEL

TABLE OF CONTENTS

10.202.AB		VAR - 392194, 392210, 758400, 758588 - AIR CLEANER
10.202.AD	01	VAR - 392194, 392210, 758400, 758588 - AIR CLEANER & INTAKE PARTS
10.202.AH		VAR - 392194, 392210, 758400, 758588 - AIR CLEANER, SUPPORT
10.202.AK		VAR - 392194, 392210, 758400, 758588 - AIR CLEANER, SUPPORT
10.202.AM		VAR - 392194, 392210, 758400, 758588 - AIR CLEANER, SUPPORT
10.206.AF	02	FUEL FILTER/WATER SEPARATOR, 4 CYLINDER
10.206.AF	04	VAR - 758223, 758235, 758240, 758241, 758527, 758530, 758533 - FUEL FILTER/WATER SEPARATOR, 4 CYLINDER
10.206.AF	05	FUEL FILTER, COMPONENTS
10.216.AA	01	VAR - 758405, 758406 - EXTRA FUEL TANK, SUPPORT
10.216.AA	02	VAR - 758405, 758406 - EXTRA FUEL TANK
10.216.AA	03	VAR - 758405, 758406 - EXTRA FUEL TANK
10.216.AA	04	VAR - 758406 - EXTRA FUEL TANK, SHIELD
10.216.AI	01	VAR - 390142, 758404 - FUEL TANK, SUPPORT
10.216.AI	02	VAR - 390142, 758404 - FUEL TANK
10.216.AI	03	VAR - 390142, 758404 - FUEL TANK
10.216.AI	04	VAR - 758404, 758406 - FUEL TANK
10.216.AX		VAR - 758223, 758235, 758240, 758241, 758527, 758530, 758533 - FUEL COOLER
10.216.AY	02	VAR - 758223, 758235, 758240, 758241, 758527, 758530, 758533 - FUEL COOLER, LINE, 4 CYLINDER
10.216.BA	02	FUEL TANK, LINE, 4 CYLINDER
10.216.BA	04	VAR - 758223, 758235, 758240, 758241, 758527, 758530, 758533 - FUEL TANK, LINE, 4 CYLINDER
10.216.BB	01	VAR - 390142, 758404, 758405, 758406 - FUEL TANK, BREATHER
10.216.BB	02	VAR - 758405, 758406 - FUEL TANK, BREATHER
10.254.AD	01	VAR - 744985 - VERTICAL EXHAUST, EXHAUST PIPE
10.254.AD	02	VAR - 743749, 392209, 743729, 392209 - VERTICAL EXHAUST, EXHAUST PIPE
10.254.AD	03	VAR - 390819 - EXHAUST PIPE, COVER, W/O FRONT LOADER
10.254.AD	04	VAR - 743702, 758344, 758351, 758352, 758353, 758354, 758478 - EXHAUST PIPE, COVER, W/ LOADER READY
10.254.AZ		VAR - 758400 - ENGINE EXHAUST BRAKE
10.304.AP	01	VAR - 392194, 392210, 758400, 758588 - BLOW-OFF SYSTEM
10.304.AP	02	VAR - 392194, 392210, 758400, 758588 - BLOW-OFF SYSTEM
10.304.AP	03	VAR - 392194, 392210, 758400, 758588 - BLOW-OFF SYSTEM, FILTER
10.310.AA	01	VAR - 392195, 392204, 743764, 743766, 758413, 759414, 758415, 758416, 758581 - AFTERCOOLER

TABLE OF CONTENTS

10.310.AF	01	VAR - 392195, 392204, 743764, 743766, 758413, 759414, 758415, 758416, 758581 - AFTERCOOLER LINE
10.400.AK	01	VAR - 392194, 392210, 758400, 758588 - EXPANSION TANK
10.400.AY	01	VAR - 392194, 392210, 758400, 758588 - RADIATOR & HOSE
10.400.BE		VAR - 392194, 392210, 758400, 758588 - RADIATOR
10.400.BF	01	VAR - 392194, 392210, 758400, 758588 - RADIATOR, SUPPORT
10.400.BF	02	VAR - 392195, 392204, 743764, 743766, 758413, 759414, 758415, 758416, 758581 - RADIATOR FAN SHROUD
10.400.BF	03	VAR - 392194, 392210, 758400, 758588 - RADIATOR FAN SHROUD
10.400.BF	04	VAR - 392194, 392210, 758400, 758588 - RADIATOR FAN SHROUD
10.400.BF	05	VAR - 390409, 392196, 758417, 758418, 758419, 758420, 758421, 758424, 758425, 758426, 758429 - RADIATOR, BAFFLE
10.400.BF	06	VAR - 744965, 744966, 744968, 744969, 758422, 758423, 758427, 758428 - RADIATOR, BAFFLE
10.400.BF	07	VAR - 390811, 744790 - RADIATOR, FRAME, SUPPORT, W/O FRONT HYDRAULIC LIFT
10.400.BF	08	VAR - 743699, 743700, 744600 - RADIATOR, FRAME, SUPPORT, W/ FRONT HYDRAULIC LIFT
10.400.BH	01	VAR - 392194, 392210, 758400, 758588 - EXPANSION TANK
10.414.AC		VAR - 392194, 392210, 758400, 758588 - ENGINE, FAN
10.414.AD		VAR - 390643, 758482 - ENGINE, FAN, PULLEY
10.414.BE		VAR - 391192, 758557, 758558 - ENGINE, BELT
10.500.AA	01	VAR - 390142, 758404, 758405, 758406 - DEF/ADBLUE™ TANK
10.500.AA	02	VAR - 390142, 758404, 758405, 758406 - DEF/ADBLUE™ TANK
10.500.AC	01	VAR - 392195, 392204, 743764, 743766, 758413, 758414, 758415, 758416, 758581 - COOLANT, VALVE, LINE
10.500.AD	01	VAR - 392195, 392204, 743764, 743766, 758413, 758414, 758415, 758416, 758581 - DEF/ADBLUE™ LINES
10.500.AO	01	VAR - 392194, 392210, 758400, 758588 - MUFFLER
10.500.AO	02	VAR - 392194, 392210, 758400, 758588 - MUFFLER, PIPE
10.500.AO	03	VAR - 392194, 392210, 758400, 758588 - MUFFLER, SUPPORT
10.500.AS	01	VAR - 391630, 743723 - MUFFLER, CATALYST
10.500.AS	02	VAR - 391630, 743723 - MUFFLER, CATALYST, SUPPORT
10.500.AS	03	VAR - 743812 - MUFFLER, CATALYST
10.500.AS	04	VAR - 743812 - MUFFLER, CATALYST, SUPPORT
18.000.00		SECTION INDEX - CLUTCH
18.100.AF		VAR - 392195, 743764, 743766, 758413, 758414, 758415, 758416, 758581 - CLUTCH, PEDAL
19.000.00		SECTION INDEX - POWER COUPLING

TABLE OF CONTENTS

19.100.AB		VAR - 392195, 392204, 743764, 743766, 758413, 758414, 758415, 758416, 758581 - TRANSMISSION, DRIVEN SHAFT
19.110.AA		VAR - 392195, 392204, 743764, 743766, 758413, 758414, 758415, 758416, 758581 - FLYWHEEL, DAMPER
21.000.00	01	SECTION INDEX - TRANSMISSION
21.000.00	02	SECTION INDEX - TRANSMISSION
21.103.AA	01	VAR - 394835, 758441 - ACCUMULATOR
21.103.AA	02	VAR - 394835, 758441 - ACCUMULATOR, HOSE
21.103.AA	03	VAR - 391828 - ACCUMULATOR
21.103.AJ	01	VAR - 391828 - OIL FILTER
21.109.AD	01	VAR - 391828, 394835, 758441 - TRANSMISSION, COOLING SYSTEM LINE
21.109.AD	02	VAR - 394835, 758441 - OIL COOLER LINE
21.109.AD	03	VAR - 391828 - OIL COOLER LINE
21.109.AD	04	VAR - 394835, 758441 - OIL COOLER LINE
21.109.AD	05	VAR - 394835, 758441 - OIL COOLER LINE
21.109.AD	06	VAR - 394835, 758441 - OIL COOLER LINE
21.109.AD	07	VAR - 394835, 758441 - OIL COOLER LINE
21.109.AE		VAR - 394835, 758441 - OIL COOLER LINE, BY-PASS VALVE
21.109.AE	08	VAR - 391828 - OIL COOLER LINE
21.109.AK		VAR - 392194, 392210, 758400, 758588 - TRANSMISSION, OIL COOLER
21.111.AC	01	VAR - 392195, 392204, 743764, 743766, 758413, 758414, 758415, 758416, 758581 - TRANSMISSION HOUSING
21.111.AC	02	VAR - 392195, 392204, 743764, 743766, 758413, 758414, 758415, 758416, 758581 - TRANSMISSION HOUSING, SPACER
21.111.AC	04	VAR - 392194, 392210, 758400, 758588 - ENGINE, PIN
21.111.AC	05	VAR - 392195, 392204, 743764, 743766, 758413, 758414, 758415, 758416, 758581 - TRANSMISSION HOUSING, OUTPUT, WALL
21.111.AC	06	VAR - 392195, 392204, 743764, 743766, 758413, 758414, 758415, 758416, 758581 - TRANSMISSION HOUSING, BRACKET
21.111.AC	07	VAR - 392195, 392204, 743764, 743766, 758413, 758414, 758415, 758416, 758581 - TRANSMISSION HOUSING, MOUNTING
21.118.AB		VAR - 390911, 743811 - TRANSMISSION HOUSING, PIPE PLUG
21.118.AF	01	VAR - 392195, 392204, 743764, 743766, 758413, 758414, 758415, 758416, 758581 - TRANSMISSION HOUSING, REAR, MOUNTING
21.118.AF	02	VAR - 392195, 392204, 743764, 743766, 758413, 758414, 758415, 758416, 758581 - TRANSMISSION HOUSING, REAR
21.130.BF	01	VAR - 392195, 392204, 743764, 743766, 758413, 758414, 758415, 758416, 758581 - TRANSMISSION HOUSING, COVER, MOUNTING
21.130.BF	02	VAR - 392195, 392204, 743764, 743766, 758413, 758414, 758415, 758416, 758581 - TRANSMISSION HOUSING, COVER

TABLE OF CONTENTS

21.130.BF	03	VAR - 392195, 392204, 743764, 743766, 758413, 758414, 758415, 758416, 758581 - TRANSMISSION HOUSING, COVER, FORKS
21.133.AG	01	VAR - 394782, 758068, 758069 - TRANSMISSION, SEMI-POWERSHIFT, CONTROL LEVER, GEARSHIFT (16X16)
21.133.AK	01	VAR - 392195, 392204, 743764, 743766, 758413, 758414, 758415, 758416, 758581 - TRANSMISSION CONTROL VALVE
21.133.AK	02	VAR - 392195, 392204, 743764, 743766, 758413, 758414, 758415, 758416, 758581 - TRANSMISSION CONTROL VALVE
21.133.AK	03	VAR - 392195, 392204, 743764, 743766, 758413, 758414, 758415, 758416, 758581 - TRANSMISSION CONTROL VALVE, COMPONENTS
21.133.AK	04	VAR - 391828 - TRANSMISSION CONTROL VALVE, COMPONENTS
21.148.AH	01	VAR - 743764, 743766 - TRANSMISSION, SPLITTER, CLUTCH
21.148.AH	02	VAR - 743764, 743766 - TRANSMISSION, SPLITTER, GEAR
21.152.AA	01	VAR - 392195, 392204, 743764, 743766, 758413, 758414, 758415, 758416, 758581 - TRANSMISSION, CLUTCH
21.152.AA	02	VAR - 392195, 392204, 743764, 743766, 758413, 758414, 758415, 758416, 758581 - TRANSMISSION, CLUTCH
21.152.AE	01	VAR - 392195, 392204, 743764, 743766, 758413, 758414, 758415, 758416, 758581 - TRANSMISSION, CLUTCH, GEAR
21.152.AE	02	VAR - 392195, 392204, 743764, 743766, 758413, 758414, 758415, 758416, 758581 - TRANSMISSION, GEAR
21.152.AE	03	VAR - 392195, 392204, 743764, 743766, 758413, 758414, 758415, 758416, 758581 - TRANSMISSION, CENTRAL REDUCTION GEAR
21.152.AE	04	VAR - 392195, 392204, 743764, 743766, 758413, 758414, 758415, 758416, 758581 - TRANSMISSION, SYNCHRONIZER
21.152.AK		VAR - 392195, 392204, 743764, 743766, 758413, 758414, 758415, 758416, 758581 - TRANSMISSION, SHAFT
21.152.AM	01	VAR - 392195, 392204, 743764, 743766, 758413, 758414, 758415, 758416, 758581 - TRANSMISSION, SHAFT, COVER
21.152.AM	02	VAR - 392195, 392204, 743764, 743766, 758413, 758414, 758415, 758416, 758581 - TRANSMISSION, SHAFT, COVER
21.200.AA	01	VAR - 392195, 392204, 743764, 743766, 758413, 758414, 758415, 758416, 758581 - DROP BOX
21.900.AA		VAR - 392195, 392204, 743764, 743766, 758413, 758414, 758415, 758416, 758581 - HYDRAULIC PUMP, GEAR
23.000.00		SECTION INDEX - 4WD LINES
23.202.AD	01	VAR - 392195, 392204, 743764, 743766, 758413, 758414, 758415, 758416, 758581 - FRONT-WHEEL DRIVE ENGAGEMENT, SHAFT
23.202.AI	01	VAR - 392195, 392204, 743764, 743766, 758413, 758414, 758415, 758416, 758581 - FRONT-WHEEL DRIVE ENGAGEMENT, GEAR
23.202.AP	01	VAR - 391223, 758430, 758432, 758434 - FRONT-WHEEL DRIVE ENGAGEMENT, CLUTCH
23.314.AE		VAR - 392195, 392204, 743764, 743766, 758413, 758414, 758415, 758416, 758581 - DRIVEN SHAFT, JOINT
23.314.AF	01	VAR - 758422, 758423, 758427, 758428 - DRIVE SHAFT, SUSPENDED FRONT AXLE, COVER
23.314.AF	02	VAR - 758422, 758423, 758427, 758428 - DRIVE SHAFT, SUSPENDED FRONT AXLE, INTERMEDIATE AXLE

TABLE OF CONTENTS

23.314.AF	03	VAR - 758422, 758423, 758427, 758428 - DRIVE SHAFT, SUSPENDED FRONT AXLE, CYLINDER
23.314.AF	04	VAR - 758422, 758423, 758427, 758428 - DRIVE SHAFT, SUSPENDED FRONT AXLE, JOINT
23.314.AF	05	VAR - 758422, 758423, 758427, 758428 - DRIVE SHAFT, SUSPENDED FRONT AXLE, REAR COVER
23.314.AF	07	VAR - 758424, 758429 - DRIVE SHAFT, SUSPENDED FRONT AXLE, COVER, SUPERSTEER
23.314.AG	01	VAR - 758422, 758423, 758427, 758428 - DRIVE SHAFT, UNIVERSAL JOINT
23.314.AG	02	VAR - 758426 - DRIVE SHAFT, UNIVERSAL JOINT
23.314.AG	03	VAR - 758418, 758419, 758421 - DRIVE SHAFT, UNIVERSAL JOINT
23.314.AG	04	VAR - 758424, 758429 - DRIVE SHAFT, UNIVERSAL JOINT, SUPERSTEER
23.314.AH	01	VAR - 390409, 392196, 758417, 758420, 758425 - 4WD FRONT AXLE, DRIVE SHAFT
23.314.AH	02	VAR - 390409, 392196, 758417, 758420, 758425 - 4WD FRONT AXLE, DRIVE SHAFT, GUARD
23.314.AH	02	VAR - 758418, 758419, 758421, 758426 - 4WD FRONT AXLE, DRIVE SHAFT
23.314.AH	03	VAR - 758418, 758419, 758421, 758426 - 4WD FRONT AXLE, DRIVE SHAFT
25.000.00	01	SECTION INDEX - FRONT MECHANICAL DRIVE
25.000.00	02	SECTION INDEX - FRONT MECHANICAL DRIVE
25.100.AD	01	VAR - 390409, 392196, 758417, 758418, 758419, 758420, 758421 - FRONT AXLE, HOUSING
25.100.AD	02	VAR - 758422, 758423 - SUSPENDED FRONT AXLE WITH HYDR. DIFF. LOCK, STRG SENSOR & BRAKES, HOUSING
25.100.AD	03	VAR - 392196, 758417, 758418, 758419, 758424, 758427, 758428 - FRONT AXLE, HOUSING, W/ DIFFERENTIAL LOCK, W/ STEERING SENSORS
25.100.AD	04	VAR - 758425, 758426 - SUSPENDED FRONT AXLE WITH HYDR. DIFF. LOCK & STRG SENSOR, HOUSING
25.100.AD	05	VAR - 392196, 758417, 758418, 758419, 758424 - FRONT AXLE, HOUSING, SUPERSTEER
25.100.AD	06	VAR - 758424, 758429 - FRONT AXLE W/MULTI-PLATE DIFF. LOCK & STRG SENSOR, HOUSING, SUPERSTEER
25.100.AI	01	VAR - 758417, 758418, 758419, 758420, 758421, 390409, 392196 - AXLE SUPPORT, ARTICULATION
25.100.AI	02	VAR - 758425, 758426 - AXLE SUPPORT, ARTICULATION, SUSPENDED FRONT AXLE WITH HYDR. DIFF. LOCK & STRG SENSOR
25.100.AI	03	VAR - 758424 - SUSPENDED FRONT AXLE W/MULTI-PLATE DIFF. LOCK & STRG SENSOR, ARTICULATION, SUPERSTEER
25.100.AI	04	VAR - 758429 - SUSPENDED FRONT AXLE W/MULTI-PLATE DIFF. LOCK & STRG SENSOR, ARTICULATION, SUPERSTEER
25.100.AI	05	VAR - 758424 - AXLE SUPPORT, ARTICULATION, SUPERSTEER
25.100.AV	01	VAR - 390811, 744790 - 4WD FRONT AXLE, SUPPORT

TABLE OF CONTENTS

25.100.AV	02	VAR - 390811 - 4WD FRONT AXLE, W/O FRONT PTO, SUPPORT
25.100.AV	03	VAR - 390811, 744600 - 4WD FRONT AXLE, SUPPORT, SUPERSTEER
25.100.AV	04	VAR - 743699, 743700 - 4WD FRONT AXLE, INTEGRATED HYDRAULIC LIFT, SUPPORT
25.100.AV	05	VAR - 743699, 743700 - 4WD FRONT AXLE, INTEGRATED HYDRAULIC LIFT, SUPPORT
25.100.AV	06	VAR - 743699, 743700 - 4WD FRONT AXLE, W/ FRONT HYDRAULIC LIFT, SUPPORT, ATTACHMENT
25.100.AV	07	VAR - 743699, 743700 - 4WD FRONT AXLE, INTEGRATED HYDRAULIC LIFT, SUPPORT, ATTACHMENT
25.100.AV	08	VAR - 758478 - ENGINE, SIDE RAIL
25.100.AV	09	VAR - 390811 , 390926, 744790 - 4WD FRONT AXLE, SUPPORT, PLUGS
25.100.AV	10	VAR - 392195, 392204, 743764, 743766, 758413, 758414, 758415, 758416, 758581 - 4WD FRONT AXLE, SUPPORT, PLUGS
25.102.AC	01	VAR - 390409, 392196, 758417, 758418,758419, 758420, 758421 - FRONT AXLE, DIFFERENTIAL, CARRIER
25.102.AC	02	VAR - 390409, 392196, 758417, 758418,758419, 758420, 758421 - FRONT AXLE, BEVEL GEAR
25.102.AC	03	VAR - 390409, 392196, 758417, 758418,758419, 758420, 758421 - FRONT AXLE, SHIM KIT
25.102.AC	04	VAR - 390409, 392196, 758417, 758418,758419, 758420, 758421 - FRONT AXLE, SHIM KIT
25.102.AC	05	VAR - 758422, 758423, 758424 - FRONT AXLE, SHIM KIT, W/DIFFERENTIAL LOCK
25.102.AC	06	VAR - 758422, 758423 - SUSPENDED FRONT AXLE WITH HYDR. DIFF. LOCK, STRG SENSOR & BRAKES, DIFFERENTIAL, CARRIER
25.102.AC	07	VAR - 758422, 758423 - SUSPENDED FRONT AXLE WITH HYDR. DIFF. LOCK, STRG SENSOR & BRAKES, BEVEL GEAR
25.102.AC	08	VAR - 392196, 758417, 758418, 758419, 758422, 758423, 758424 - FRONT AXLE, SHIM KIT, W/DIFFERENTIAL LOCK, W/ STEERING SENSOR
25.102.AC	09	VAR - 392196, 758417, 758418, 758419, 758427, 758428, 758429 - FRONT AXLE, DIFFERENTIAL, CARRIER, W/DIFFERENTIAL LOCK, W/ STEERING SENSOR
25.102.AC	10	VAR - 758427, 758428 - SUSPENDED FRONT AXLE WITH HYDR. DIFF. LOCK, STRG SENSOR & BRAKES, DIFFERENTIAL, CARRIER
25.102.AC	11	VAR - 758427, 758428 - SUSPENDED FRONT AXLE WITH HYDR. DIFF. LOCK, STRG SENSOR & BRAKES, BEVEL GEAR
25.102.AC	12	VAR - 758425, 758426 - SUSPENDED FRONT AXLE WITH HYDR. DIFF. LOCK & STRG SENSOR, DIFFERENTIAL, CARRIER
25.102.AC	13	VAR - 758425, 758426 - SUSPENDED FRONT AXLE WITH HYDR. DIFF. LOCK & STRG SENSOR, BEVEL GEAR
25.102.AC	14	VAR - 758424 - SUSPENDED FRONT AXLE W/MULTI-PLATE DIFF. LOCK & STRG SENSOR, DIFFERENTIAL, CARRIER, SUPERSTEER
25.102.AC	15	VAR - 758424 - SUSPENDED FRONT AXLE W/MULTI-PLATE DIFF. LOCK & STRG SENSOR, DIFFERENTIAL, BEVEL GEAR, SUPERSTEER
25.102.AC	16	VAR - 758429 - FRONT AXLE W/MULTI-PLATE DIFF. LOCK & STRG SENSOR, DIFFERENTIAL, CARRIER, SUPERSTEER
25.102.AC	17	VAR - 758429 - FRONT AXLE W/MULTI-PLATE DIFF. LOCK & STRG SENSOR, BEVEL GEAR, SUPERSTEER

TABLE OF CONTENTS

25.102.AD	01	VAR - 390409, 758420, 758421, 758422, 758423 - FRONT AXLE, DIFFERENTIAL GEAR, W/ STEERING SENSOR
25.102.AD	02	VAR - 758422, 758423 - SUSPENDED FRONT AXLE WITH HYDR. DIFF. LOCK, STRG SENSOR & BRAKES, DIFFERENTIAL GEAR
25.102.AD	03	VAR - 758417, 758418, 758419, 392196 - FRONT AXLE, DIFFERENTIAL GEAR, W/ STEERING SENSOR
25.102.AE	01	VAR - 758425, 758426 - SUSPENDED FRONT AXLE WITH HYDR. DIFF. LOCK & STRG SENSOR, LIMITED SLIP DIFFERENTIAL
25.102.AE	02	VAR - 758427, 758428 - SUSPENDED FRONT AXLE WITH HYDR. DIFF. LOCK, STRG SENSOR & BRAKES, LIMITED SLIP DIFFERENTIAL
25.102.AE	03	VAR - 392196, 758417, 758418, 758419, 758424 - LIMITED SLIP DIFFERENTIAL
25.102.AE	04	VAR - 758429 - LIMITED SLIP DIFFERENTIAL, FRONT AXLE W/MULTI-PLATE DIFF. LOCK & STRG SENSOR, SUPERSTEER
25.102.AS	01	VAR - 390409, 758420, 758421, 758422, 758423 - DIFFERENTIAL LOCK, CONTROLS
25.102.AS	02	VAR - 758422, 758423 - SUSPENDED FRONT AXLE WITH HYDR. DIFF. LOCK, STRG SENSOR & BRAKES, DIFFERENTIAL LOCK
25.102.AT	01	VAR - 390409, 758420, 758421, 758425, 758426 - DIFFERENTIAL LOCK, HYD. LINE
25.102.AT	02	VAR - 390409, 758420, 758421, 758423, 758424, 758425, 758426, 758427, 758428, 758429, 758449 - DIFFERENTIAL LOCK, HYD. LINE
25.102.AT	03	VAR - 758422, 758423, 758427, 758428 - SUSPENDED FRONT AXLE WITH HYDR. DIFF. LOCK, STRG SENSOR & BRAKES, HYD. LINE
25.102.AT	04	VAR - 758429 - FRONT AXLE W/MULTI-PLATE DIFF. LOCK & STRG SENSOR, HYD. LINE, SUPERSTEER
25.102.AT	05	VAR - 758424 - SUSPENDED FRONT AXLE W/MULTI-PLATE DIFF. LOCK & STRG SENSOR, HYD. LINE, SUPERSTEER
25.102.AT	06	VAR - 758424, 758429 - FRONT AXLE W/MULTI-PLATE DIFF. LOCK & STRG SENSOR, HYD. LINE, SUPERSTEER
25.108.AA	01	VAR - 390409, 392196, 758417, 758418, 758419, 758420, 758421, 758422 - FRONT AXLE, SHAFT
25.108.AA	02	VAR - 758422, 758423 - SUSPENDED FRONT AXLE WITH HYDR. DIFF. LOCK, STRG SENSOR & BRAKES, SHAFT
25.108.AA	03	VAR - 758425, 758426, 758427, 758428, 758429 - FRONT AXLE, SHAFT
25.108.AA	04	VAR - 392196, 758417, 758418, 758419 - FRONT AXLE, SHAFT
25.108.AA	05	VAR - 758424 - SUSPENDED FRONT AXLE W/MULTI-PLATE DIFF. LOCK & STRG SENSOR, SHAFT, SUPERSTEER
25.108.AB	01	VAR - 390409, 392196, 758417, 758418, 758419, 758420, 758421, 758422, 758423, 758424 - FRONT AXLE, PLANETARY REDUCER
25.108.AB	02	VAR - 390409, 392196, 758417, 758418, 758419, 758420, 758421, 758422, 758424 - FRONT AXLE, PLANETARY REDUCER
25.108.AB	03	VAR - 758423 - SUSPENDED FRONT AXLE WITH HYDR. DIFF. LOCK, STRG SENSOR & BRAKES, PLANETARY REDUCER
25.108.AB	04	VAR - 758425, 758426, 758427, 758428, 758429 - FRONT AXLE, PLANETARY REDUCER
25.108.AB	05	VAR - 758429 - FRONT AXLE W/MULTI-PLATE DIFF. LOCK & STRG SENSOR, PLANETARY REDUCER, SUPERSTEER
25.108.AG	01	VAR - 390409, 758420, 758421, 758422 - FRONT AXLE, STEERING KNUCKLE

TABLE OF CONTENTS

25.108.AG	02	VAR - 390409, 392196, 758417, 758418, 758419, 758420, 758421, 758422, 758423 - FRONT AXLE, STEERING KNUCKLE
25.108.AG	03	VAR - 758422, 758423 - SUSPENDED FRONT AXLE WITH HYDR. DIFF. LOCK, STRG SENSOR & BRAKES, STEERING KNUCKLE
25.108.AG	04	VAR - 758423 - SUSPENDED FRONT AXLE WITH HYDR. DIFF. LOCK, STRG SENSOR & BRAKES, STEERING KNUCKLE
25.108.AG	05	VAR - 758428 - SUSPENDED FRONT AXLE WITH HYDR. DIFF. LOCK, STRG SENSOR & BRAKES, STEERING KNUCKLE
25.108.AG	06	VAR - 758425, 758426, 758427 - FRONT AXLE, STEERING KNUCKLE
25.108.AG	07	VAR - 758428 - SUSPENDED FRONT AXLE WITH HYDR. DIFF. LOCK, STRG SENSOR & BRAKES, STEERING KNUCKLE
25.108.AG	08	VAR - 758425, 758426, 758427 - FRONT AXLE, STEERING KNUCKLE
25.108.AG	09	VAR - 758424 - SUSPENDED FRONT AXLE W/MULTI-PLATE DIFF. LOCK & STRG SENSOR ,STEERING KNUCKLE, SUPERSTEER
25.108.AG	10	VAR - 758424 - SUSPENDED FRONT AXLE W/MULTI-PLATE DIFF. LOCK & STRG SENSOR ,STEERING KNUCKLE, SUPERSTEER
25.108.AG	11	VAR - 758429 - FRONT AXLE W/MULTI-PLATE DIFF. LOCK & STRG SENSOR, STEERING KNUCKLE, SUPERSTEER
25.108.AG	12	VAR - 758429 - FRONT AXLE W/MULTI-PLATE DIFF. LOCK & STRG SENSOR, STEERING KNUCKLE, SUPERSTEER
25.108.AG	13	VAR - 758417, 758418, 758419, 392196 - FRONT AXLE, STEERING KNUCKLE
25.108.AN	01	VAR - 390409, 392196, 758417, 758418, 758419, 758420, 758421, 758422, 758424 - FRONT AXLE, STEERING KNUCKLE
25.108.AN	02	VAR - 758422, 758423 - SUSPENDED FRONT AXLE WITH HYDR. DIFF. LOCK, STRG SENSOR & BRAKES, STEERING KNUCKLE
25.108.AN	03	VAR - 758425, 758426, 758427, 758429 - FRONT AXLE, STEERING KNUCKLE
25.108.AN	04	VAR - 758428 - SUSPENDED FRONT AXLE WITH HYDR. DIFF. LOCK, STRG SENSOR & BRAKES, STEERING KNUCKLE
25.108.AN	05	VAR - 390409, 392196, 758417, 758418, 758419, 758420, 758421, 758422, 758423, 758424, 758425, 758426, 758427, 758428, 758429 - FRONT AXLE, WHEEL BOLT
25.122.AA		VAR - 758422, 758423, 758427, 758428 - FRONT AXLE, SUSPENDED, ACCUMULATOR
25.122.AD	01	VAR - 758422, 758423, 758427, 758428 - FRONT AXLE, SUSPENDED, CYLINDER, LINE
25.122.AD	02	VAR - 758422, 758423, 758427, 758428 - FRONT AXLE, SUSPENDED, CYLINDER, LINE
25.122.AD	03	VAR - 743689, 743690, 758422, 758423, 758427, 758428, 758445 - FRONT AXLE, SUSPENDED, CHECK VALVE
25.122.AL	01	VAR - 758422, 758423, 758427, 758428 - FRONT AXLE, SUSPENDED, CONTROL VALVE
25.122.AL	02	VAR - 758422, 758423, 758427, 758428 - FRONT AXLE, SUSPENDED, CONTROL VALVE, SUPPORT
25.122.AL	03	VAR - 758422, 758423, 758427, 758428 - FRONT AXLE, SUSPENDED, CONTROL VALVE, SUPPORT
25.122.AM	01	VAR - 758422, 758423, 758427, 758428, 743689, 743690, 758445, 758352, 758354, 758353 - FRONT AXLE, SUSPENDED, CONTROL VALVE, LINE
27.000.00		SECTION INDEX - REAR DRIVE AXLE

TABLE OF CONTENTS

27.100.AA	01	VAR - 391828 - REAR AXLE, OIL, LEVEL INDICATOR
27.100.AA	02	VAR - 392803, 394835, 758441 - REAR AXLE, OIL, LEVEL INDICATOR
27.100.AI	01	VAR - 392195, 392204, 743764, 743766, 758413, 758414, 758415, 758416, 758581 - DIFFERENTIAL, LUBRICATION LINE
27.100.AI	02	VAR - 392195, 392204, 743764, 743766, 758413, 758414, 758415, 758416, 758581 - REAR AXLE, HOUSING, BREATHER
27.100.AI	04	VAR - 390923, 758450, 758451, 758452, 758454 - REAR AXLE, HOUSING, BREATHER
27.100.AI	05	VAR - 758453 - REAR AXLE, HOUSING, BREATHER
27.106.AB	01	VAR - 392195, 392204, 758413, 758414, 758415, 758416, 758581 - REAR AXLE, BEVEL PINION
27.106.AB	02	VAR - 743764, 743766 - REAR AXLE, BEVEL PINION
27.106.AC	01	VAR - 391223, 758430, 758432, 758434 - FINAL DRIVE, DIFFERENTIAL
27.106.AC	02	VAR - 391223, 758430, 758432, 758434, 758538 - FINAL DRIVE, DIFFERENTIAL, GEAR
27.106.AC	03	VAR - 391223, 758430, 758432, 758434 - FINAL DRIVE, DIFFERENTIAL, LOCK
27.106.AC	04	VAR - 392197, 758431, 758433 - DIFFERENTIAL, SUPPORT
27.106.AC	05	VAR - 392197, 758431, 758433 - FINAL DRIVE, DIFFERENTIAL, GEAR
27.106.AE	01	VAR - 392195, 392204, 743764, 743766, 758413, 758415, 758581 - CENTRAL REDUCTION GEAR
27.106.AE	02	VAR - 392195, 392204, 743764, 743766, 758413, 758414, 758415, 758416, 758549, 758581 - TRANSMISSION, WHEEL DISC
27.120.AF	01	VAR - 391223, 392197, 758430 - FINAL DRIVE, SHAFT & GEAR
27.120.AF	02	VAR - 758431, 758432, 758433, 758434, 758538, 758539 - FINAL DRIVE, SHAFT & GEAR, DOUBLE SIZE, WHEELS
27.120.AF	03	VAR - 392195, 392204, 743764, 743766, 758413, 758414, 758415, 758416, 758581 - REAR WHEEL COUPLE, ATTACHMENT
27.120.AI	01	VAR - 391223, 392197, 758430, 758431, 758432, 758433, 758434, 758538, 758539 - FINAL DRIVE HOUSING
27.120.AR	01	VAR - 758431, 758432, 758538 - FINAL DRIVE, WHEEL HUB
27.120.AR	02	VAR - 758433, 758434, 758539 - FINAL DRIVE, WHEEL HUB
31.000.00	01	SECTION INDEX - IMPLEMENT POWER TAKE OFF
31.000.00	02	SECTION INDEX - IMPLEMENT POWER TAKE OFF
31.101.AB		VAR - 392195, 392204, 743764, 743766, 758413, 758414, 758415, 758416, 758581 - REAR PTO, RING
31.101.AC	01	VAR - 744740, 758439, 758586, 758587 - PTO, CONTROL LEVER (540/540E/1000 RPM)
31.101.AC	03	VAR - 390801, 758436, 758585 - PTO, CONTROL LEVER (540/540E/1000 RPM)
31.101.AC	08	VAR - 390801, 744740, 758436, 758437, 758439, 758586, 758587 - PTO, CONTROL LEVER (540/540E/1000 RPM)
31.104.AR	01	VAR - 392195, 758413, 758415, 758581 - PTO CLUTCH, CONTROL VALVE (35KPH) (40KPH) (16X16)

**Thanks very much for your reading,
Want to get more information,
Please click here, Then get the complete
manual**

JustClickHere 

NOTE:

**If there is no response to click on the link above,
please download the PDF document first, and then
click on it.**

**Have any questions please write to me:
admin@servicemanualperfect.com**